

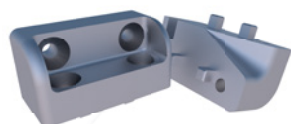
**mecanotek**

[www.mecanotek.com](http://www.mecanotek.com)



## WORKPLACE SYSTEMS FACTORY EQUIPMENT STORAGE SOLUTIONS

Benefit from our wide range modular system:  
From workplace luminaires, lifting columns, material  
trolleys and drawer cabinets to complete assembled  
production systems:  
Mecanotek offers single components  
as well as complete assembly stations  
and production systems.



## WORKPLACE SYSTEMS

## PAGE

Air stream rails	4.21
Assembly projects from ASK	4.38 - 4.45
Base cabinet	4.30
Bottle holder	4.25
Classic industrial swivel chairs and accessories	4.33
Carabiner hook	4.23
Connection sleeve for desktops	4.37
Connection cable / plug	4.20
Connection kit for modular power strip	4.18
Connector and receptacle for cable assembly	4.18
Corner piece	4.28
Corner bracket	4.29
Desktops	4.36
Display board	4.25
Drawer arrangement	4.32
Drawer cabinets and accessories	4.30 - 4.31
Fastening plate for air stream rail	4.22
Foot mat	4.37
Footrests	4.22
Industrial swivel chairs KLIMASTAR and accessories	4.34 - 4.35
Information boards and punched pockets	4.24
Keyboard holder	4.19
LED circline magnifier luminaires	4.11
LED flexible-tube luminaires	4.14 - 4.15
LED friction arm luminaires	4.12 - 4.13
LED large view illuminated magnifier	4.10
LED strips	4.16
LED tube luminaires	4.17
LED system luminaires	4.4 - 4.9
Lifting columns	4.26 - 4.27
Material level Basic	4.29
Material level Economic	4.28
Material trolley Basic	4.29
Material trolley Economic	4.28
Plate material	4.36
Plug-in nipple with external thread	4.21
Power strips	4.18 - 4.19
Profile 22,5 x 30	4.28
Profile 22,5 x 45	4.29
Quick action coupling	4.21
Reduction nipple	4.21
Screwdriver suspension	4.23
Sealing plug with external thread	4.22
Spring balancers	4.23
Strap for attaching system luminaires	4.9
T-distributor for plug system T-I3	4.20
TFT monitor bracket	4.24
Tool slider for slot 8 und slot 10	4.23

## ERGONOMIC QUALITY OF WORKPLACES

The ergonomic quality of workplaces in industry is partly dependent upon whether visual tasks can be overcome effortlessly.

Here, companies are also facing a challenge due to demographic change. For example, a 60-year old employee requires twice the amount of light required by a 20-year old colleague.

With the new LED system lights from ASK you can react optimally to all requirements and adjust the lighting on an individual basis.

You can obtain these LED system lights in 6 different lengths and almost every length in 4 different designs (230V; 230V dimable; 100-277V & 24V DC).

**The perfect light for every requirement!**

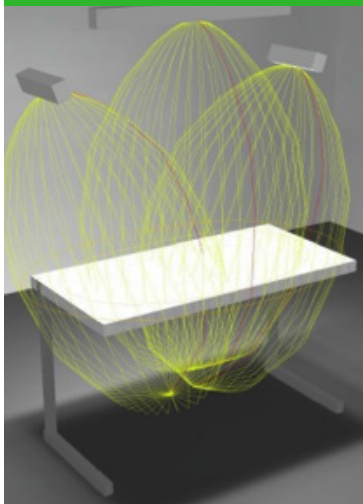


LED system luminaires available in 6 lengths from 300mm to 1735mm

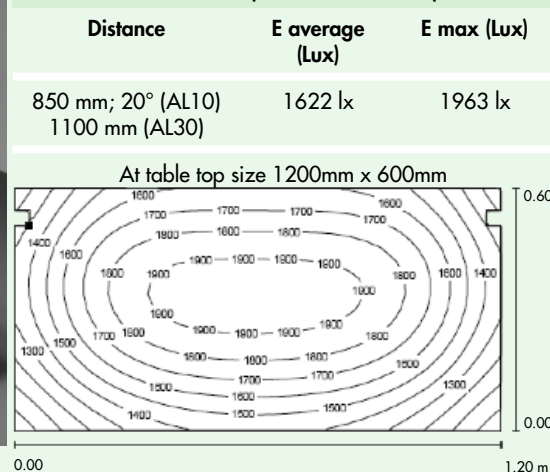


Plug and receptacles for cable with system plug also for implementation with multiple lights. Microprism panel and diffuser foil for even illumination of the working area.

## EXAMPLE OF A COMBINATION OF DIFFERENT LED SYSTEM LIGHTS TO A HIGHLY EFFECTIVE LIGHTING SYSTEM



**Illuminance combination (example)**  
2x LED-AL10 S|D - 1x LED-AL30 S|D



Connector M12; 5-pole with 24V version.



On/off switch and continuous fastening slot in a highly compact aluminium housing.



Different attachment and combination possibilities

## GOOD LIGHT AT WORKING PLACES MAKES SENSE!

### ADVANTAGES OF USING LED SYSTEM LIGHTS AT WORKING PLACES

- Very compact design
- Energy savings up to 75% and up to 20% more light in comparison to T5 illuminants
- Lifetime of LED-illuminants up to 50.000 hours
- Also available as a 6500K (CRI >90) variant

### PRODUCTIVITY

Good light increases productivity by up to 40%

### SAFETY

Up to 2/3 of accidents can be avoided with appropriate lighting

### HEALTH

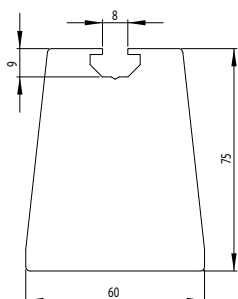
Significantly less absences with individually adjusted light

### ENERGY SAVING

Huge saving potentials through LED lighting, up to 75% in comparison to T5 fluorescent tubes



603119



## SYSTEM LUMINAIRES LED-AL10/14

ECO | S | 24V | US

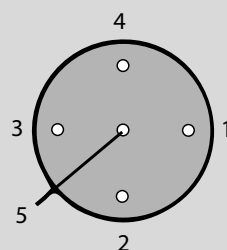
System luminaire LED-AL10 ECO (without switch)	4000K	Article no.: 603310
System luminaire LED-AL10 S	5000K	Article no.: 603119
System luminaire LED-AL10 24V	5000K	Article no.: 603140
System luminaire LED-AL10S US	5000K	Article no.: 603113
System luminaire LED-AL14S	5000K	Article no.: 603118
Length	300 mm	
LED power	603310   603119   603113	8 W
LED power	603140	8,3 W
LED power	603118	12 W
Voltage/frequency	603310   603119   603118	220-240V/50-60Hz
Voltage/direct current	603140	24VDC (+/- 1V)
Voltage/frequency	603113	100-240V/50-60Hz
Power/current consumption	603310   603119	10,5 W / 0,045 A
Power/current consumption	603140	8,3 W / 0,35 A
Power/current consumption	603113	11,5 W / 0,095 A
Power/current consumption	603118	15 W / 0,065 A
Connection	603310   603119   603113   603118	GST18i3 IN / OUT
Connection	603140	M12 "A" male 5p
System of protection	IP 20	
Colour rendering index CRI	~ 85	
Scope of supply	System luminaire without cable	
Material housing	Anodised aluminium	
Required accessories (see page 4.20)	Powercord or connecting cable	
Optional accessories (see page 4.9)	Strap for attaching system luminaires	

## Illuminance LED-AL 10 S | 24V

System luminaires LED-AL20 to LED-AL60 are also available with drawbar (on request)

Distance (mm)	E average (Lux)	E max (Lux)
750 mm	635 lx	1004 lx
1000 mm	417 lx	548 lx
1250 mm	289 lx	345 lx
1500 mm	209 lx	237 lx

At table top size 800 mm x 600 mm  
**Colour rendering index CRI ~ 85**  
 (LED-AL10 ECO 4000K CRI >80)



1=not assigned  
 2=not assigned  
 3=0V  
 4=24V  
 5=not assigned



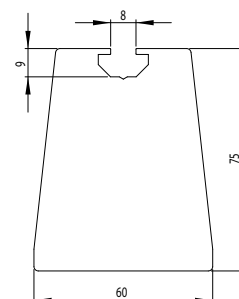
## SYSTEM LUMINAIRES LED-AL20

S | D | 24V | US

System luminaire LED-AL20S	5000K	Article no.:	603120
System luminaire LED-AL20 D dimmable from 1-100%	5000K	Article no.:	603130
System luminaire LED-AL20 24V (without switch)	5000K	Article no.:	603141
System luminaire LED-AL20S US	5000K	Article no.:	603114
Length	585 mm		
LED power	603120   603130	16 W	
LED power	603141   603114	16,6 W	
Voltage/frequency	603120   603130	220-240V/50-60Hz	
Voltage/direct current	603141	24VDC (+/- 1V)	
Voltage/frequency	603114	100-277V/50-60Hz	
Power/current consumption	603120	18,5 W / 0,08 A	
Power/current consumption	603130	23 W / 0,1 A	
Power/current consumption	603141	16,6 W / 0,7 A	
Power/current consumption	603114	25 W / 0,21 A	
Connection	603120   603130   603114	GST18i3 IN/OUT	
Connection	603141	M12 "A" male 5p	
System of protection	IP 20		
Colour rendering index CRI	~ 85		
Scope of supply	System luminaire without cable		
Material housing	Anodised aluminium		
Required accessories (see page 4.20)	Powercord or connecting cable		
Optional accessories (see page 4.9)	Strap for attaching system luminaires		



603120



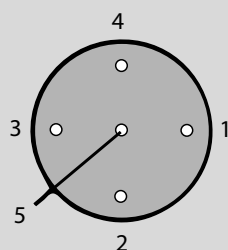
## Illuminance LED-AL 20D

Distance (mm)	E average (Lux)	E max (Lux)
750 mm	1231 lx	1998 lx
1000 mm	840 lx	1114 lx
1250 mm	598 lx	740 lx
1500 mm	442 lx	515 lx

At table top size 1000mm x 600mm  
At LED-AL20 24V approx. 10% less.

Colour rendering index CRI ~ 85

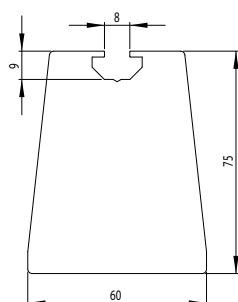
System luminaires LED-AL20 to LED-AL60 are also available with drawbar (on request)



1=not assigned  
2=not assigned  
3=0V  
4=24V  
5=not assigned



603121



## SYSTEM LUMINAIRE LED-AL30

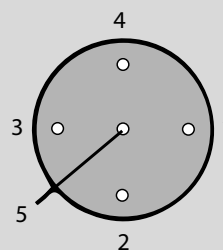
ECO | S | 24V | US

System luminaire LED-AL30 ECO (without switch)	4000K	Article no.:	603300
System luminaire LED-AL30 S	5000K	Article no.:	603121
System luminaire LED-AL30D (dimmable from 1-100%)	5000K	Article no.:	603131
System luminaire LED-AL30 24V	5000K	Article no.:	603142
System luminaire LED-AL30S US	5000K	Article no.:	603115
Length	870 mm		
LED power	603300   603121   603131	21 W	
LED power	603142   603115	25 W	
Voltage/frequency	603300   603121   603131	220-240V/50-60Hz	
Voltage/direct current	603142	24VDC (+/- 1V)	
Voltage/frequency	603115	100-277V/50-60Hz	
Power/current consumption	603300   603121	23 W / 0,1 A	
Power/current consumption	603131	25 W / 0,11 A	
Power/current consumption	603142	25 W / 1,05 A	
Power/current consumption	603115	32 W / 0,27 A	
Connection	603300	GST18i3 IN	
Connection	603121   603131   603115	GST18i3 IN/OUT	
Connection	603142	M12 "A" male 5p	
System of protection	IP 20		
Colour rendering index CRI	~ 85		
Scope of supply	System luminaire without cable		
Material housing	Anodised aluminium		
Required accessories (see page 4.20)	Powercord or connecting cable		
Optional accessories (see page 4.9)	Strap for attaching system luminaires		

## Illuminance LED-AL 30 D | DF | 24 V

Distance (mm)	E average (Lux)	E max (Lux)
750 mm	1732 lx	2559 lx
1000 mm	1194 lx	1562 lx
1250 mm	859 lx	1042 lx
1500 mm	641 lx	739 lx

At table top size 1000mm x 600mm  
At LED-AL30 24V approx. 10% less  
Colour rendering index CRI ~ 85  
(LED-AL30 ECO 4000K CRI >80)



1=not assigned  
2=not assigned  
3=0V  
4=24V  
5=not assigned

System luminaires LED-AL20 to LED-AL60 are also available with drawbar (on request)





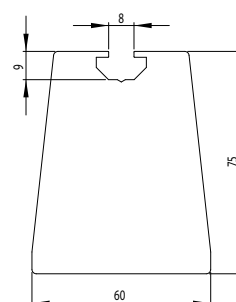
## SYSTEM LUMINAIRE LED-AL40

S | D | 24V | US

System luminaire LED-AL40S		5000K	Article no.:	603122
System luminaire LED-AL40D (dimmmable from 1-100%)		5000K	Article no.:	603132
System luminaire LED-AL40 24V (without switch)		5000K	Article no.:	603143
System luminaire LED-AL40S US		5000K	Article no.:	603116
Length			1150 mm	
LED power	603122   603132	28 W		
LED power	603143   603116	33,2 W		
Voltage/frequency	603122   603132	220-240V/50-60Hz		
Voltage/direct current	603143	24VDC (+/- 1V)		
Voltage/frequency	603116	100-277V/50-60Hz		
Power/current consumption	603122	30 W / 0,13 A		
Power/current consumption	603132	32 W / 0,14 A		
Power/current consumption	603143	33,2 W / 1,4 A		
Power/current consumption	603116	41 W / 0,34 A		
Connection	603122   603132   603116	GST18i3 IN/OUT		
Connection	603143	M12 "A" male 5p		
System of protection			IP 20	
Colour rendering index CRI			~ 85	
Scope of supply			System luminaire without cable	
Material housing			Anodised aluminium	
Required accessories (see page 4.20)			Powercord or connecting cable	
Optional accessories (see page 4.9)			Strap for attaching system luminaires	



603122



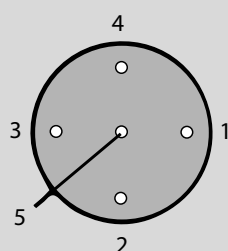
### Illuminance LED-AL 40 S | D

Distance (mm)	E average (Lux)	E max (Lux)
750 mm	2003 lx	2896 lx
1000 mm	1420 lx	1862 lx
1250 mm	1045 lx	1285 lx
1500 mm	795 lx	932 lx

At table top size 1200mm x 600mm  
At LED-AL40 24V approx. 10% less

Colour rendering index CRI ~ 85

System luminaires LED-AL20 to LED-AL60 are also available with drawbar (on request)



1=not assigned  
2=not assigned  
3=0V  
4=24V  
5=not assigned

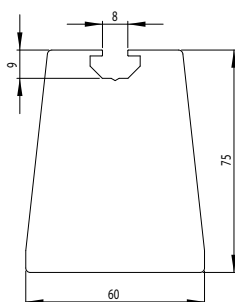


## SYSTEM LUMINAIRE LED-AL50

S | D | 24V | US



603123



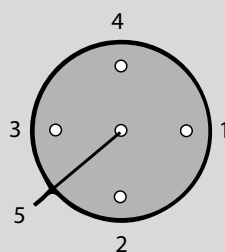
System luminaire LED-AL50S	5000K	Article no.:	603123
System luminaire LED-AL50D (dimmable from 1-100%)	5000K	Article no.:	603133
System luminaire LED-AL50 24V (without switch)	5000K	Article no.:	603144
System luminaire LED-AL50S US	5000K	Article no.:	603117
Length	1435 mm		
LED power	603123   603133	35 W	
LED power	603144   603117	41,5 W	
Voltage/frequency	603123   603133	220-240V/50-60Hz	
Voltage/direct current	603144	24VDC (+/- 1V)	
Voltage/frequency	603117	100-277V/50-60Hz	
Power/current consumption	603123   603133	39 W / 0,17 A	
Power/current consumption	603144	41,5 W / 1,75 A	
Power/current consumption	603117	50 W / 0,42 A	
Connection	603123   603133   603117	GST18i3 IN/OUT	
Connection	603144	M12 "A" male 5p	
System of protection	IP 20		
Colour rendering index CRI	~ 85		
Scope of supply	System luminaire without cable		
Material housing	Anodised aluminium		
Required accessories (see page 4.20)	Powercord or connecting cable		
Optional accessories (see page 4.9)	Strap for attaching system luminaires		

## Illuminance LED-AL 50 S | D

System luminaires  
LED-AL20  
to LED-AL60 are  
also available  
with drawbar  
(on request)

Distance (mm)	E average (Lux)	E max (Lux)
750 mm	2081 lx	3082 lx
1000 mm	1517 lx	2061 lx
1250 mm	1146 lx	1468 lx
1500 mm	891 lx	1090 lx

At table top size 1600mm x 600mm  
At LED-AL50 24V approx. 10% less  
Colour rendering index CRI ~ 85



1=not assigned  
2=not assigned  
3=0V  
4=24V  
5=not assigned

## LIGHT COLOUR

Standard is **5000K** neutral white

Special version with **6500K CRI >90** is available on request (daylight white).

**Blue light equals productivity!**

Blue light has a stimulating effect, speeds up reactions, enhances performance!

Studies show that productivity increases by up to **15%** for example with **5000K and 6500K!**





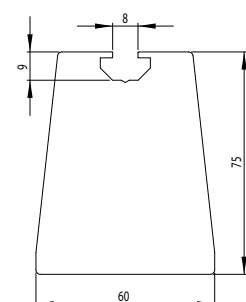
## SYSTEM LUMINAIRE LED-AL60

S | D | 24V | US

System luminaire LED-AL60S	5000K	Article no.:	603124
System luminaire LED-AL60D (dimmable from 1-100%)	5000K	Article no.:	603134
System luminaire LED-AL60 24V (without switch)	5000K	Article no.:	603145
Length	1735 mm		
LED power	603124   603134	42 W	
LED power	603145	50 W	
Voltage/frequency	603124   603134	220-240V/50-60Hz	
Voltage/direct current	603145	24VDC (+/- 1V)	
Power/current consumption	603124   603134	46 W / 0,2 A	
Power/current consumption	603145	50 W / 2,1 A	
Connection	603124   603134	GST18i3 IN/OUT	
Connection	603145	M12 "A" male 5p	
System of protection	IP 20		
Colour rendering index CRI	~ 85		
Scope of supply	System luminaire without cable		
Material housing	Anodised aluminium		
Required accessories (see page 4.20)	Powercord or connecting cable		
Optional accessories (see page 4.9)	Strap for attaching system luminaires		



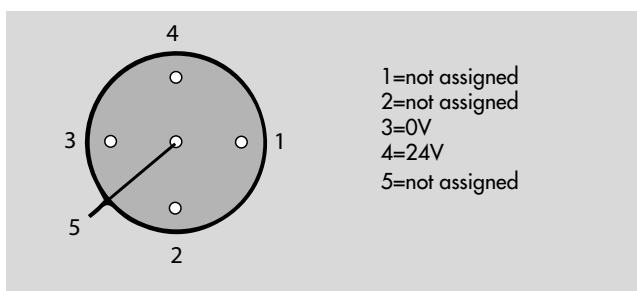
603124



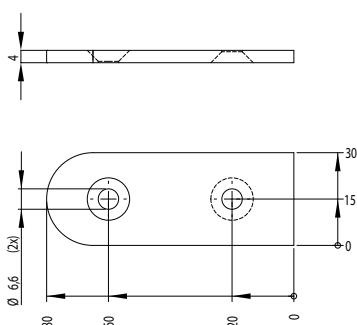
### Illuminance LED-AL 60 D

Distance (mm)	E average (Lux)	E max (Lux)
750 mm	2119 lx	3161 lx
1000 mm	1575 lx	2180 lx
1250 mm	1212 lx	1595 lx
1500 mm	958 lx	1211 lx

At table top size 2000mm x 600mm  
At LED-AL60 24V approx. 10% less



System luminaires LED-AL20 to LED-AL60 are also available with drawbar (on request)



### STRAP for attaching system luminaires

for LED Article no.: 99900651

Scope of supply: 1 piece

Without mounting kit

Material

Galvanised steel



## LED-LARGE-VIEW ILLUMINATED MAGNIFIER

### 3-diopter rectangular-shaped lens

#### Product data

High quality, crown optical glass lens 171 x 108 mm with 3 diopters for comfortable vision. Perfect size for several hours of use.  
With exchangeable NARVA LED-light 6W, lamp base 2G11, 160°, with matted glass tube for diffused light distribution and for the protection of the LEDs.  
Top quality LEDs: NICHIA® cool daylight 6500K/CRI 80 (970 lm, EEK A++)  
Manufacturers warranty for 6 years for LED-illuminant (55.000h)  
Up to 2500 lx in 30 cm operating distance -  
Clearly exceeds the luminous efficiency of a 18W TC-L lamp with 60% less energy consumption  
Various mounting options as accessories, can be ordered separately

#### Colour

Colour white RAL 9010

#### LED converter

Integrated constant current-LED-converter, no retrofit!

**LED Large View Illuminated Magnifier  
incl. LED light 6500K**

**Article no.: 603227**

**Replacement LED-light SL-L 6W/865**

**Article no.: 603228**

## ACCESSORIES

**Screwdown base**

**Article no.: 603229**

**Wall bracket**

**Article no.: 603230**

**Table clamp 75mm**

**Article no.: 603231**

**Heavy table base**

**Article no.: 603232**

## CIRCLINE MAGNIFIERS >>

With our circline magnifiers you obtain a high quality "optical package" for constantly high visual perception speeds, increased viewing comfort and fatigue-free work with great value for money. Universally applicable in numerous sectors.

## LED-RLL MASTER

### LED circular illuminated magnifier 12W

<b>Product data</b>	Innovative LED-circular magnifier with variable segment control Large field of view due to high quality glass lens Ø 150 mm, 3-diopters = 175% magnification 48 x High-CRI-LEDs in ring shape, up to zu 6000 lx at a distance of 15cm 5000K, CRI >90 for best, almost daylight-like colour rendering Lighting head with 3-D-articulation point, sturdy friction-arm
<b>Master-Control</b>	Continuously dimmable via switch 1 in lighting head Segmentally switchable via switch 2 for several light scenes (all ON, sidelight, oblique light only by posterior segment) For the visualisation or various objects
<b>Colour</b>	silver/black, incl. screwdown base 60x60 mm

LED-RLL Master 3-Dio	Article no.:	603221
----------------------	--------------	--------

## ACCESSORIES

Wall bracket	Article no.:	603269
Table clamp 0-44mm	Article no.:	603276
Table clamp 16-85mm	Article no.:	603271
Heavy table base	Article no.:	603272



## LED-RLL PRO

### LED-circline magnifier luminaire 8W, 3- or 5-diopters

<b>Product data</b>	Pro-model with high-quality glass lens Ø 120 mm, 3-diopters = 175% magnification or 5-diopters = 225% magnification Sturdy friction arm with integrated spring support Lighting head with 3D-joint Incl. screw-down base 60x60 mm and lense cover 21 circular arranged NICHIA®-LEDs 5000K, CRI >80 (typ. 85) Dimmable within three steps
<b>Colour</b>	silver grey RAL 9006

LED-RLL PRO 3-Dio	Article no.:	603220
-------------------	--------------	--------

LED-RLL PRO 5-Dio	Article no.:	603225
-------------------	--------------	--------

## ACCESSORIES

Wall bracket	Article no.:	603269
Table clamp 0-44mm	Article no.:	603276
Table clamp 16-85mm	Article no.:	603271
Heavy table base	Article no.:	603272



## ALL-ROUND LED

### Universal Tasklights 14/28W

#### Product data

Sturdy, high quality workplace lighting with high efficient LED-light engines - up to 150 lm/W, Optionally stepless dimmable (1-100%)  
Glare control via microprismatic optics + high tech diffusor foil  
Gracile lighting head with small cross-section and sturdy, but easy-going ball-and-socket joint

#### Colour

Silver grey RAL 9006, incl. screw-down base 60x60 mm  
5000K, CRI >80, system of protection IP20

#### Light colour

Universally applicable at assembly workplaces and test stations with very high light requirement

#### Lighting head

With 14W, 335mm wide | with 28W, 577mm wide

#### ALLROUND 14W/5000K, nonDIM

#### Article no.:

603265

#### ALLROUND 14W/5000K, DIM

#### Article no.:

603267

#### ALLROUND 28W/5000K, DIM

#### Article no.:

603268

## ACCESSORIES

#### Wall bracket

#### Article no.:

603269

#### Table clamp 0-44 mm

#### Article no.:

603276

#### Table clamp 16-85 mm

#### Article no.:

603271

#### Heavy table base

#### Article no.:

603272

## M-LED

### Universal Tasklight IP 54

#### Product data

Compact all-round luminaire with higher system of protection including 12W LED-Power  
Spacious planar lighting due to 3 row arranged midpower-LEDs  
Light guidance and glare control through innovative 90° multiple lense  
High energy saving comparing to 2x18W TC-L with considerably more light

#### Light colour

#### Colour

5000K, CRI >80, system of protection: IP 54

#### LED driver

Silver, incl. screwdown base 60x60 mm  
(more fastening accesories see ALLROUND LED)

Integrated in arm, 220 - 240V~/50-60Hz, nonDIM

#### M-LED 12W, nonDIM

#### Article no.:

603219

## M-LITE LED IP 65

## LED friction-arm machine luminaires 12W

### Product data

Powerful machine luminaires with 6x1W HiPower LED-module and 25° angle of illumination  
Luminous efficiency clearly exceeds 50W halogen  
- up to 5800 lux in 50 cm operating distance  
with concurrently high energy savings  
Extremely low-maintenance:  
Long LED-lifetime, up to 40.000 h and more.  
Cool lighting head, especially no heat development at the protective glass cover preventing that coolants, lubricants etc. burn in  
Switch arranged easy-reach at lighting head

### Mounting

Fastening via four base-integrated boreholes

### Colour

Head: naturally anodized, arm: silver

### LED converter

With version RTL integrated in mounting base,  
100-240V ~ / 50-60Hz  
With versions RL und RTL integrated, 24V AC/DC,  
Class of protection III

RTL | long radius of swivel arm 100-240V

Article no.: 603262

RL | short radius of swivel arm 24V

Article no.: 603263

RS | short radius of swivel arm 24V

Article no.: 603264



## LED FLEXIBLE TUBE LUMINAIRES

The LED flexible arm lamp offers you bright, concentrated LED light. The flexible tube arm makes this LED lamp a highly diverse machine and workplace lamp. Low energy consumption and a long LED service life are additional advantages of this lamp



### LED FLEX VARIO

#### LED flexible tube luminaire 4W

<b>Product data</b>	By rotating the lighting head the angle of illumination can be focused from approx. 4 up to 48° Cold white LED mit prefixed glass lense Very variable through extra-long metal flexible tube: 700 mm Lighting head, switch and cable entry Sealed against dust, dirt, and liquid splashes
<b>Colour</b>	black
<b>LED driver</b>	Integrated in the base of luminaire, 100 - 240V~/50-60Hz
<b>LED-FLEX VARIO, screw-on version</b>	<b>Article no.: 603211</b>

### ACCESSORIES

<b>Table clamp 0-40mm for VARIO</b>	<b>Article no.: 603216</b>
<b>Magnetic base for VARIO</b>	<b>Article no.: 603217</b>

### COOL-FLEX LED

#### All-purpose flexible arm model 14W

<b>Product data</b>	Application at all kind of workplaces with normal ambient conditions. Cost-effective workplace lighting. Evenly planar lighting through LED-Light engine + grooved bezel approx. 20% more light with less than 20% energy consumption than a comparable compact fluorescent lamp 18W Dimmable through rotary encoder from 100 to 25%. Sturdy, fully flexible metal tube ('gooseneck') Length 500 mm
<b>Mounting</b>	Screw-on version - clamp, wall bracket or magnetic base as accessory. Only for fastening on horizontal surfaces.
<b>Light colour</b>	Light colour 5000K, CRI >80, System of protection: IP 20
<b>Colour</b>	Colour: silver/black
<b>LED driver</b>	Integrated in the base base of luminaire, 100 - 240V~/50-60Hz
<b>COOL-Flex LED, screw-on version</b>	<b>Article no.: 603209</b>

### ACCESSORIES

<b>Wall bracket</b>	<b>Article no.: 603215</b>
<b>Table clamp</b>	<b>Article no.: 603214</b>
<b>Magnetic base</b>	<b>Article no.: 603213</b>



### LED FLEX3 BASIC

#### LED flexible tube 3W

Product data	Universally applicable, Light is comparable with 20W halogen luminaire) Cold white LED-module 3x1W + triple lens with 30° angle of illumination Sturdy, flexible metal tube: 500 mm System of Protection IP 20		
Colour	black		
LED driver	Integrated in the base of luminaire, 100 - 240V~/50-60Hz		
LED-FLEX BASIC, screw-on version	Article no.:	603212	

### ACCESSORIES

Table clamp 0-40mm for BASIC	Article no.:	603214
Magnetic base for BASIC	Article no.:	603213



### LED-FLEX6 MFT

#### LED flexible tube lamp 6W, IP 65

Product data	Versatile machine lamp suitable even for harsh environmental conditions Concentrated, powerful point lighting without heat development LED module 3 x 2W with lense 30° (comparable with 35W halogen) Colour temperature approx. 5700K cold white Adjustable via sturdy, flexible metal tube 500 mm Lighting head with two-way swivel joint		
Mounting	Screw-on version - Clamp, wall bracket or magnetic base as accessories		
Colour	black		
LED driver	Integrated in the base of luminaire, 100 - 240V~/50-60Hz		
LED-FLEX6 MFT, screw-on version	Article no.:	603218	

### ACCESSORIES

Wall bracket	Article no.:	603215
Table clamp	Article no.:	603214
Magnetic base	Article no.:	603213



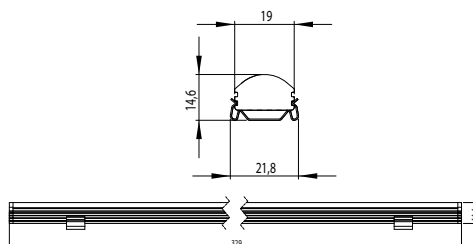


### LED STRIPS SET

LED strips set 33 | 230 V Article no.: 603200

LED strips set 33 | 24V Article no.: 6032001

Length 330 mm  
Power / voltage 5.76 Watts / 230V  
Number of LEDs 18  
Luminous flux 370 lm  
Scope of supply Incl. LED strip, operating device, 1.5m supply line, switch, retainer clips, Euro plug  
Housing material Anodised aluminium

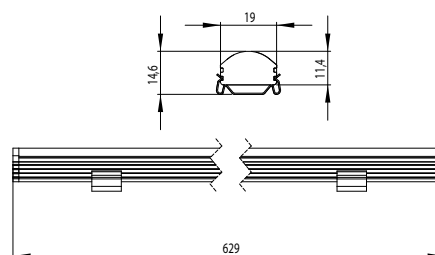


### LED STRIPS SET

LED aluminium strip 63 | 230 V Article no.: 603203

LED aluminium strip 63 | 24V Article no.: 6032031

Length 630 mm  
Power / voltage 11.52 Watts / 230V  
Number of LEDs 36  
Luminous flux 740 lm  
Scope of supply Incl. LED strip, operating device, 1.5m supply line, switch, retainer clips, Euro plug  
Housing material Anodised aluminium

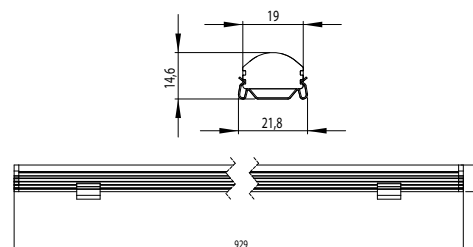


### LED STRIPS SET

LED aluminium strip 93 | 230 V Article no.: 603204

LED aluminium strip 93 | 24V Article no.: 6032042

Length 930 mm  
Power / voltage 17.28 Watts / 230V  
Number of LEDs 54  
Luminous flux 1110 lm  
Scope of supply Incl. LED strip, operating device, 1.5m supply line, switch, retainer clips, Euro plug  
Housing material Anodised aluminium

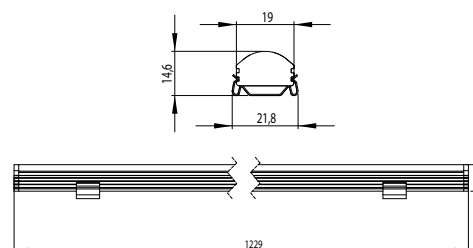


### LED STRIPS SET

LED aluminium strip 123 | 230 V Article no.: 603206

LED aluminium strip 123 | 24V Article no.: 6032061

Length 1230 mm  
Power / voltage 23.04 Watts / 230V  
Number of LEDs 72  
Luminous flux 1480 lm  
Scope of supply Incl. LED strip, operating device, 1.5m supply line, switch, retainer clips, Euro plug  
Housing material Anodised aluminium



## SRL T70 LED 14 | 28 | 42W

### Tube luminaires IP 67

#### Product data

Robust and waterproof  
Suitable for the illumination of machine tools, machining centres etc.  
as well as for diverse industrial applications.  
Incl. linear cool-white LED-light engines - approx. 20% more light with  
more than 20% energy-saving as comparable compact-LS  
Integrated LED-driver for direct connection to the mains supply  
24V transparent protective tube of borosilicate glass  
with high breakage resistance.  
Resistant against oils, lubricants and coolants.  
Integrated prism-bezel for glare control  
Light emission over the entire length of the tube luminaire

#### Scope of supply

Without supply line, incl. cable gland M16  
Incl. robust rotor-brackets (GFRP)



14W



28W

### Versions for voltage 100 - 240V~ | 50-60Hz

T70 LED 14W /  
tube length 380 mm

Article no.: 603251

T70 LED 28W /  
tube length 658 mm

Article no.: 603256

T70 LED 42W /  
tube length 958 mm

Article no.: 603261

### Versions for voltage 24V AC/DC

T70 LED 14W /  
tube length 380 mm

Article no.: 603258

T70 LED 28W /  
tube length 658 mm

Article no.: 603255

T70 LED 42W /  
tube length 958 mm

Article no.: 603260



## POWER STRIPS

**Socket strip STL3  
Connection**

**Article no.: 604005**  
3 sockets

**Socket strip STL3SE  
Connection**

**Article no.: 604022**  
3 sockets,  
input switch  
switches only plug sockets

**Socket strip STL3SEA  
Connection**

**Article no.: 604023**  
3 sockets,  
output switch  
switches plug sockets  
and output

**Socket strip STL3SESA  
Connection**

**Article no.: 604031**  
3 sockets,  
input switch,  
output switch

**Socket strip STL5SESA  
Connection**

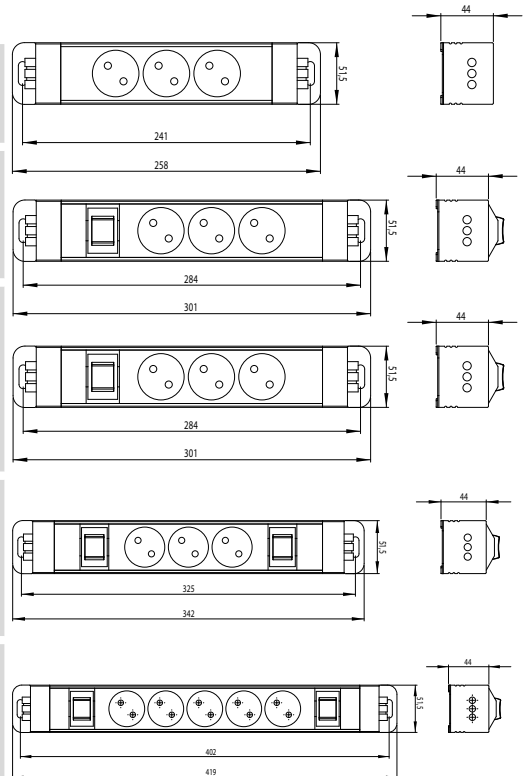
**Article no.: 604042**  
5 sockets,  
input switch,  
output switch

**Scope of supply**

Incl. fastening plate,  
without cable

**Housing material**

Anodised aluminium



## CONNECTON KIT for modular power strip

**Connection kit  
for modular power strip**

**Article no.: 604034**

**Application**

One connection kit  
required per individual  
socket strip, configure  
desired power bar with  
individual socket strips

**Housing material**

Plastic

CONNECTOR AND RECEPTACLE  
for cable assembly

**System connector**

**Article no.: 605061**

**System connector  
and receptacle**

**Article no.: 605062**

**Application**

With these parts you can  
assemble your cable  
according to your  
application case

**Material**

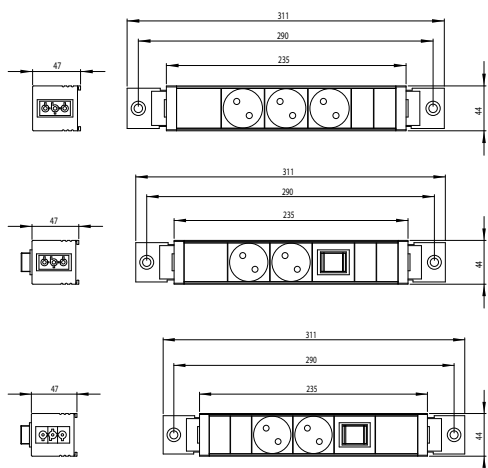
Plastic PA, black



605062



605061



## POWER STRIPS

**Power strip 3S D  
Connection**

**Article no.:** 604050  
3 sockets

**Power strip L/2S D  
Connection**

**Article no.:** 604052  
2 sockets,  
output switchable

**Power strip L/2S D  
Connection**

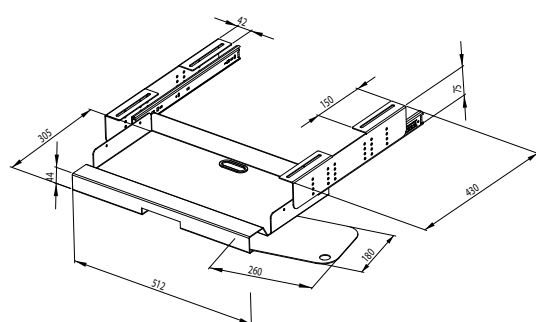
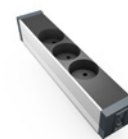
**Article no.:** 604054  
2 sockets,  
sockets switchable,  
output switchable

**Scope of supply**

Incl. fastening plate,  
without cable

**Housing material**

Anodised aluminium



## KEYBOARD HOLDER

**Keyboard holder**



**Article no.:** 613060

**Scope of supply**

incl. telescopic slides,  
mounting bracket and  
mouse tablet  
(right and left mountable, can be swivelled)

**Material**

Steel sheet, powder-coated

**Material mounting bracket,  
Mouse tablet**

Similar to RAL 9006  
(white aluminium)

**Material telescopic slides**

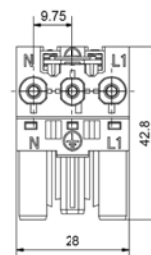
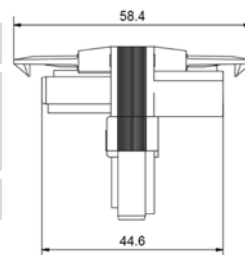
Steel, galvanised





## T-DISTRIBUTOR FOR PLUG SYSTEM T-I3

<b>T-distributor</b>	<b>Article no.:</b>	<b>605063</b>
<b>Connection</b>	1 input and 2 socket outputs	
<b>Material</b>	Plastic PA, black	



605010

## CONNECTION CABLE / PLUG

<b>Connection cable S5M</b>	<b>Article no.:</b>	<b>605010</b>
<b>Connection</b>	System receptacle, mains plug	
<b>Length</b>	5 metres	



605020

<b>Connection cable 5M</b>	<b>Article no.:</b>	<b>605020</b>
<b>Connection</b>	System receptacle, without plug	
<b>Length</b>	5 metres	



605030 - 605055

<b>Connection cable WS3M</b>	<b>Article no.:</b>	<b>605030</b>
<b>Connection</b>	System connector, system receptacle	
<b>Length</b>	3 metres	

<b>Connection cable WS2M</b>	<b>Article no.:</b>	<b>605040</b>
<b>Connection</b>	System connector, system receptacle	
<b>Length</b>	2 metres	

<b>Connection cable WS1M</b>	<b>Article no.:</b>	<b>605050</b>
<b>Connection</b>	System connector, system receptacle	
<b>Length</b>	1 metre	



605070 / 605080

<b>Connection cable WS0,5M</b>	<b>Article no.:</b>	<b>605055</b>
<b>Connection</b>	System connector, system receptacle	
<b>Length</b>	0.5 metres	

<b>Connection cable, orange 24V, 2m, M12</b>	<b>Article no.:</b>	<b>605070</b>
<b>Connection</b>	System connector, system receptacle	
<b>Length</b>	2 metres	



605070 / 605080

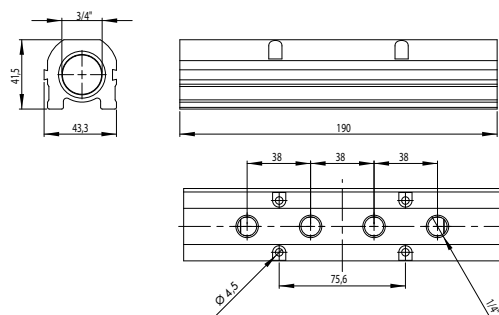
<b>Connection cable, orange 24V, 5m, M12</b>	<b>Article no.:</b>	<b>605080</b>
<b>Connection</b>	System connector, system receptacle	
<b>Length</b>	5 metres	



605090

<b>Connection cable USA</b>	<b>Article no.:</b>	<b>605090</b>
<b>Connection</b>	System connector, USA power plug	
<b>Length</b>	5 metres	

<b>Application</b>	Connection cable from power strip to system luminaire or as connection cable from system luminaire to system luminaire	
--------------------	---	--



## AIR STREAM RAIL

**Air stream rail LL4** Article no.: 606005

**Distribution block** Article no.: 606050

**Dimensions** L=190 mm; B= 43.5 mm  
**Operating pressure** Compressed air to max. 8 bar

**Scope of supply (air stream rail LL4 LL4)** Distributor block incl. retainer plate, 1 plug-in nipple, 2 quick-action couplings, 2 plugs 1/4", 1 plug 3/4", 1 reducer 3/4" - 1/2"

**Material** Blue anodised aluminium, accessory nickel-plated brass



606005



606050

## QUICK-ACTION COUPLING DN 7.2

**Coupling with external thread** Article no.: 606100

**Thread** G1/4"  
**Width across flats** 22mm  
**Material** Nickel-plated brass



## PLUG-IN NIPPLE with external thread DN 7.2

**Coupling with external thread** Article no.: 606130

**Thread** G1/2"  
**Width across flats** 24mm  
**Material** Nickel-plated brass

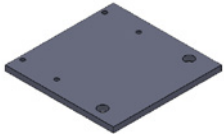


## REDUCTION NIPPLE

**Reduction nipple 3/4" - 1/2"** Article no.: 606150

**Thread** G3/4"-G1/2"  
**Width across flats** 30mm  
**Material** Nickel-plated brass



**FASTENING PLATE**Fastening plate for  
air stream rail d=5mm

Article no.: 606060

Material

Aluminium

**SEALING PLUG WITH EXTERNAL THREAD**Sealing plug with external  
thread G3/4"

Article no.: 606170

Width across flats

30mm

Sealing plug with external  
thread G1/4"

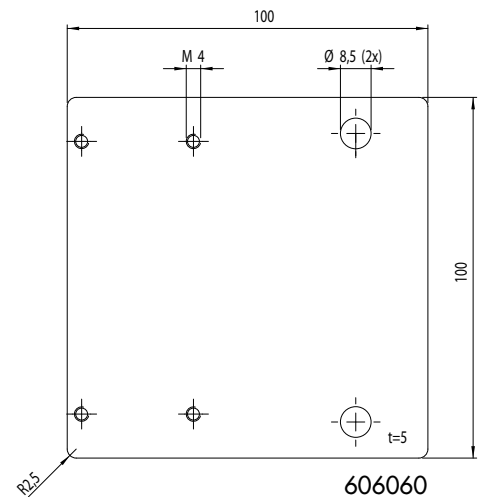
Article no.: 606180

Width across flats

17mm

Material

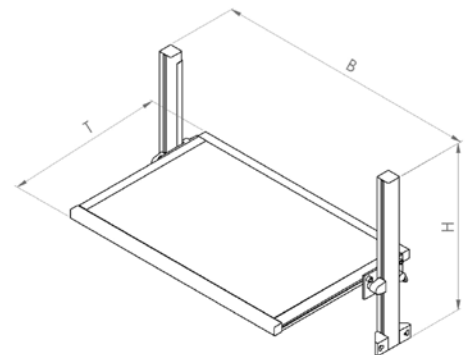
Nickel-plated brass

**FOOTREST**Footrest without  
bearing frame

Article no.: 608 020

Footrest without bearing  
frame ESD

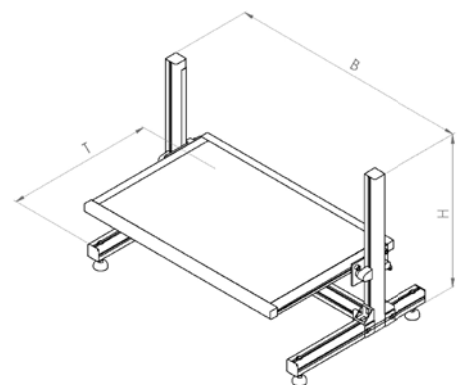
Article no.: 608030

W x D x H in mm  
MaterialW=900 x D=560 x H=566  
Frame: anodised aluminium;  
chipboard coated**FOOTREST**Footrest with  
bearing frame

Article no.: 608040

Footrest with  
bearing frame ESD

Article no.: 608050

W x D x H in mm  
MaterialW=900 x D=560 x H=660  
Frame: anodised aluminium;  
chipboard coatedConductive design per DIN EN 61340-5-1;  
suitable for use in ESD protected zones.



## SPRING BALANCERS

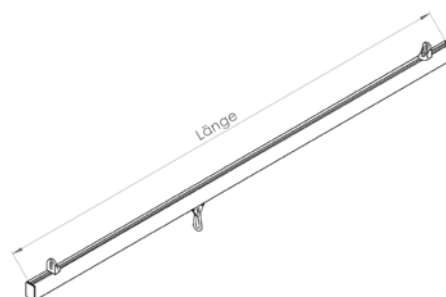


Spring balancer 0.4 - 1 kg Weight 0.5 kg	Article no.: 611010
Spring balancer 1 - 2 kg Weight 0.5 kg	Article no.: 611020
Spring balancer 2 - 4 kg Weight 0.7 kg	Article no.: 611030
Cable extension Scope of supply	1600mm Incl. suspension loop, carabiner hook
Material	Die cast aluminium housing

## SCREWDRIVER SUSPENSION



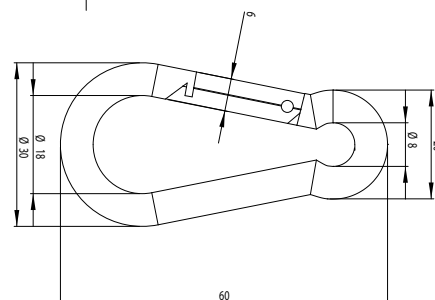
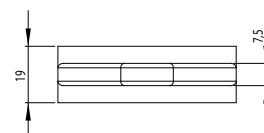
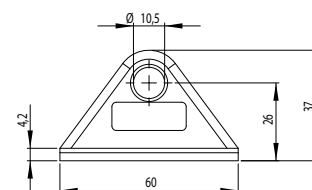
Screwdriver suspension as assembly kit	Article no.: 614010
Equipment	C-rail, carriage, end caps, fastening bracket
Length	max. 2000mm
Material	Anodised aluminium profile, plastic carriage



## ACCESSORIES



Tool slider for slot 8 and slot 10	Article no.: 614020
Material	Plastic
Carabiner hooks	Article no.: 614030
Material	Steel galvanised





616005

## INFORMATION BOARD DIN A4

	<b>Article no.:</b> 616005
<b>Equipment</b>	Incl. 1 strengthened punched pocket (PVC), Fastening material
<b>L x W</b>	370mm x 281mm
<b>Material</b>	Board: sheet steel, powder-coated, Frame: anodised aluminium



616010

616020 / 616025

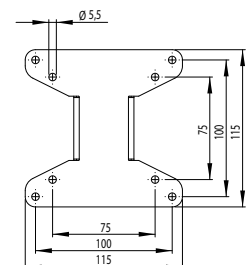
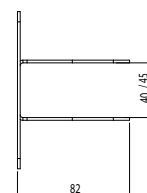
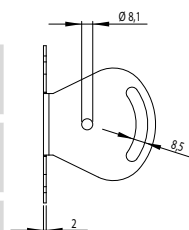
## INFORMATION BOARD 2x DIN A4

<b>Information board 2x DIN A4</b>	<b>Article no.:</b> 616010
<b>Information board 2x DIN A4 ECO</b>	<b>Article no.:</b> 616015
<b>Information board 2x DIN A4 ESD</b>	<b>Article no.:</b> 616030
<b>Punched pocket DIN A4</b> suitable for all info-boards (616005, 616010, 616015, 616030)	<b>Article no.:</b> 616020
<b>Punched pocket DIN A4 ESD</b>	<b>Article no.:</b> 616025
<b>Equipment</b>	Incl. 2 strengthened punched pockets (PVC), fastening material
<b>L x W</b>	368mm x 560mm
<b>Material</b>	board: sheet steel, powder-coated, frame: anodised aluminium
	<b>Conductive design per DIN EN 61340-5-1; suitable for use in ESD protected zones.</b>



## TFT-MONITOR BRACKET

suitable for profile 40x40	<b>Article no.:</b> 99900329
suitable for profile 45x45	<b>Article no.:</b> 99900836
<b>Description</b>	TFT-monitor bracket with VESA perforation for fastening a TFT-monitor at profile 40x40 Sviwel range 70°
<b>Material</b>	Stainless steel



## DISPLAY BOARDS

Wall element	Article no.:	616100
Display board grey	Article no.:	616110
Display board blue	Article no.:	616111
Display board white	Article no.:	616112
Display board red	Article no.:	616113
Display board yellow	Article no.:	616114
Display board green	Article no.:	616115
Display board black	Article no.:	616117
Display board bordeaux	Article no.:	616118
Display board assorted colours	Article no.:	616119
Equipment	With pivots, delivery unit display boards each 10 pieces	
Material	Wall element sheet steel powder-coated	



616114




616100



610040

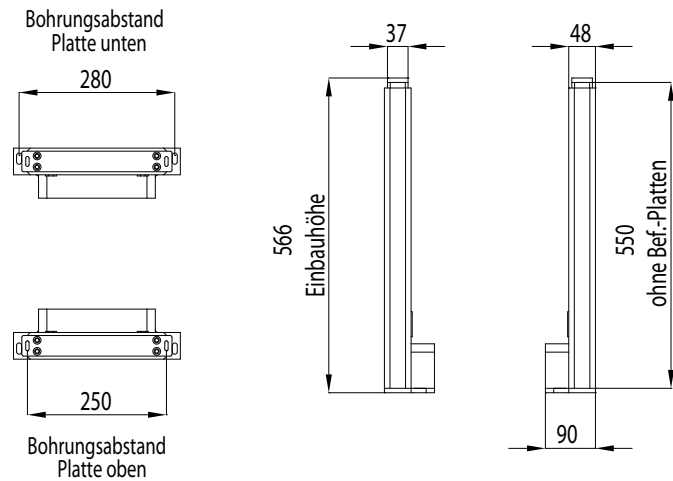
## BOTTLE HOLDER

<b>Bottle holder stainless steel</b> 	Article no.:	610040
Height 150mm, interior Ø= 95mm		
Material:	Stainless steel	
<b>Bottle holder, closed</b>	Article no.:	610020
Height 118mm, interior Ø= 79mm		
Material:	PA black	
<b>Bottle holder, open</b>	Article no.:	610030
Height 118mm, Interior Ø= 79mm		
Material:	PA black	

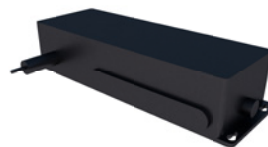


610020

610030



Fastening plates with screws



Control uni  
609021 | 609020 | 609023



Control unit  
609011



fig. left:  
without milling  
groove



fig. right:  
with milling groove

## LIFTING COLUMN SYSTEM WITH MILLING GROOVE

### AS ASSEMBLY KIT

Article no.: 609011

Stroke 355 mm  
Max. lift force 3000 N (each lifting column)  
Lifting speed 8mm/s

### Scope of supply

2 units lifting columns  
with milling groove,  
1 control unit,  
1 manual switch,  
1 fastening plate for switch,  
4 fastening plates, screws

### Material

Lifting columns: Anodised Aluminium  
Control unit: Plastic PA, electronics  
Mounting plates: Steel, powder coated  
Fastening material: Galvanised steel

### LIFTING COLUMN SYSTEM SYNCHRONISED

AS ASSEMBLY KIT	Article no.:	609021
Stroke		355 mm
Max. lift force		3000 N (each lifting column)
Lifting speed		8mm/s
Scope of supply		2 units lifting columns, 1 control unit, 1 manual switch 1 drawer for manual switch 4 fastening plates, screws
Material		Lifting columns: Anodised Aluminium Control unit: Plastic PA, electronics Mounting plates: Steel, powder coated Fastening material: Galvanised steel



Application example:  
Assembly table,  
height-adjustable

### LIFTING COLUMN SYSTEM SYNCHRONISED WITH MILLING GROOVE

AS ASSEMBLY KIT	Article no.:	609020
Stroke		355 mm
Max. lift force		3000 N (each lifting column)
Lifting speed		8mm/s
Scope of supply		2 units lifting columns with milling groove, 1 control unit, 1 manual switch 1 drawer for manual switch 4 fastening plates, screws
Material		Lifting columns: Anodised Aluminium Control unit: Plastic PA, electronics Mounting plates: Steel, powder coated Fastening material: Galvanised steel



Application example:  
Assembly table,  
height-adjustable

### LIFTING COLUMN SYSTEM SYNCHRONISED QUATTRO

AS ASSEMBLY KIT	Article no.:	609023
Stroke		355 mm
Max. lift force		3000 N (each lifting column)
Lifting speed		8mm/s
Scope of supply		4 units lifting columns with milling groove, 1 control unit, 1 manual switch 1 drawer for manual switch 8 fastening plates, screws
Material		Lifting columns: Anodised Aluminium Control unit: Plastic PA, electronics Mounting plates: Steel, powder coated Fastening material: Galvanised steel

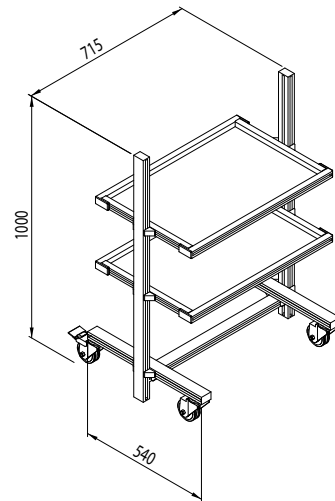


### MATERIAL TROLLEY ECONOMIC as assembly kit

**Material trolley ECONOMIC with 1 material level** Article no.: 613005

**Material trolley ECONOMIC with 2 material levels** Article no.: 613006

**Equipment** Aluminium profile 30 x 45,  
4 casters, handle, other sizes or ESD on request

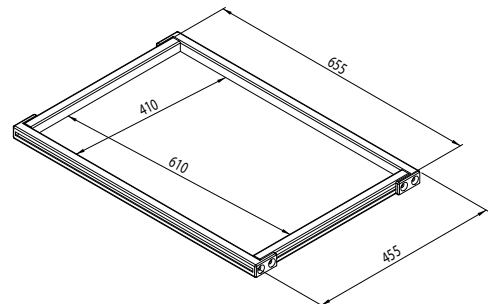
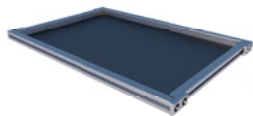


### MATERIAL LEVEL ECONOMIC

**Material level** Article no.: 613002

**Material level ESD**  Article no.: 613003

**Material** Anodised aluminium profile frame, HDF panel

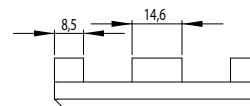
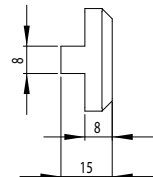
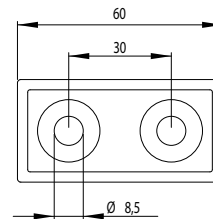


### CORNER PIECE

**Corner piece 22,5x30**  Article no.: 613050

**Scope of supply** Corner piece incl. fastening kit

**Material** Plastic PA, black



### PROFILE 22,5 × 30

slot 8

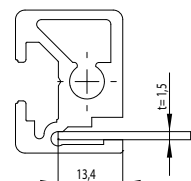
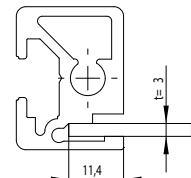
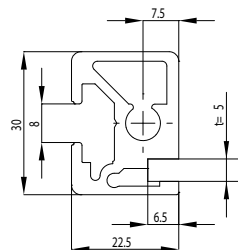
**Article no.** 201026

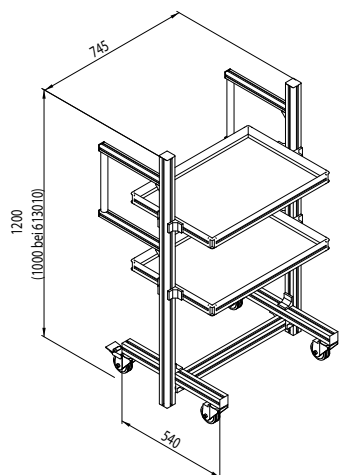
**Ix** 1.68 cm<sup>4</sup> **Wx** 1.49 cm<sup>3</sup> **Profile surface** 3.2 cm<sup>2</sup>  
**Iy** 2.97 cm<sup>4</sup> **Wy** 1.98 cm<sup>3</sup> **Mass** 0.81 kg/m

**Material** Anodised aluminium



Conductive design per DIN EN 61340-5-1;  
suitable for use in ESD protected zones.



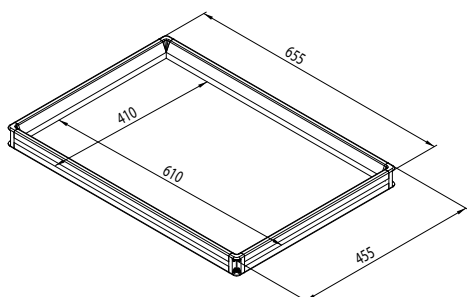


### MATERIAL TROLLEY BASIC as assembly kit

**Material trolley BASIC with 1 material level** Article no.: 613010

**Material trolley BASIC with 2 material level** Article no.: 613020

**Equipment** Aluminium profile 45x45L, 4 casters, handle, other sizes or ESD on request

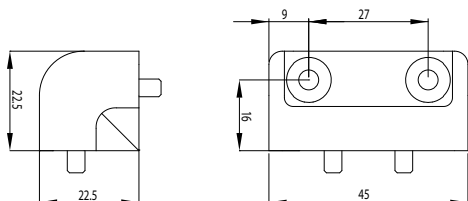
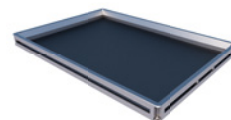


### MATERIAL LEVEL BASIC

**Material level** Article no.: 613000

**Material level ESD** Article no.: 613001

**Material** Anodised aluminium profile frame, HDF panel

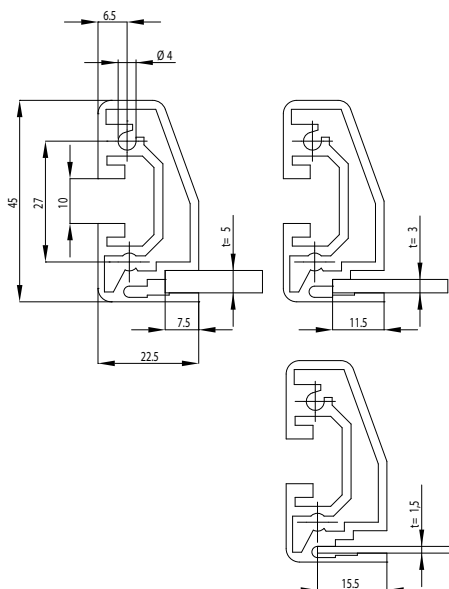


### CORNER BRACKET 22,5 × 45

**Corner bracket 22,5x45** Article no.: 613051

**Scope of supply** Corner bracket incl. fastening kit

**Material** Zinc die cast



### PROFILE 22,5 × 45

slot 10

**Article no.** 201029

**I<sub>x</sub>** 6.79 cm<sup>4</sup> **W<sub>x</sub>** 2.76 cm<sup>3</sup> **Profile surface** 3.43 cm<sup>2</sup>  
**I<sub>y</sub>** 1.66 cm<sup>4</sup> **W<sub>y</sub>** 1.28 cm<sup>3</sup> **Mass** 0.88 kg/m

**Material** Anodised aluminium



Conductive design per DIN EN 61340-5-1; suitable for use in ESD protected zones.





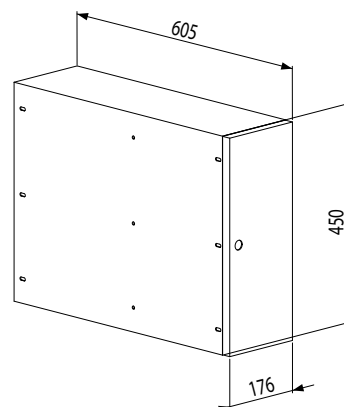


607020




### BASE CABINET

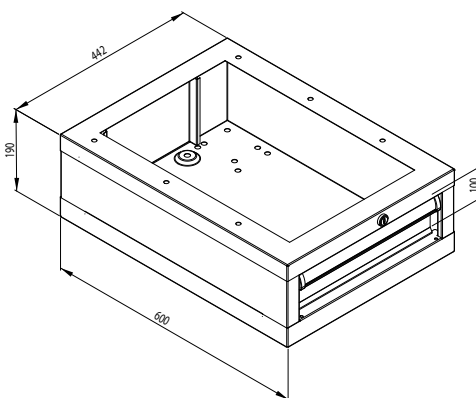
Base cabinet, left	Article no.:	607010
Base cabinet right	Article no.:	607020
Equipment	Incl. lock, pull-out and plastic container	
Material	Powder-coated sheet steel light grey (RAL 7035)	



607055


### DRAWER CABINET SB190

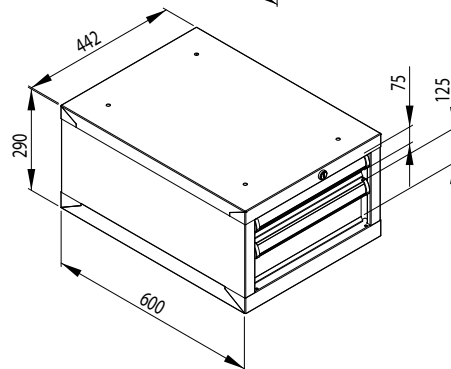
1 drawer 100	Article no.:	607055
1 drawer ESD 	Article no.:	607056
Equipment	Incl. lock	
Material	Powder-coated sheet steel	
Note:	Open-top cabinet body!	



607057


### DRAWER CABINET SB290

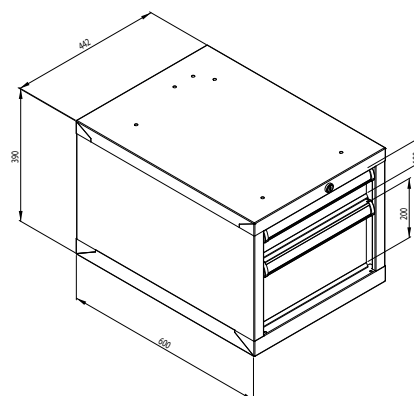
2 drawers 75/125	Article no.:	607057
2 drawers ESD 	Article no.:	607058
Equipment	Incl. lock	
Material	Powder-coated sheet steel	



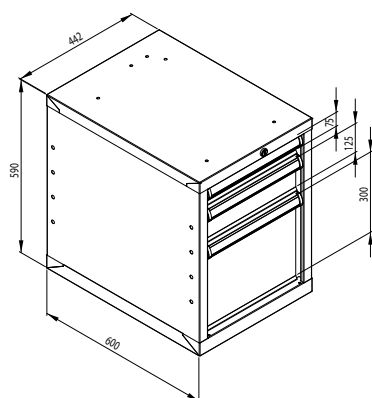
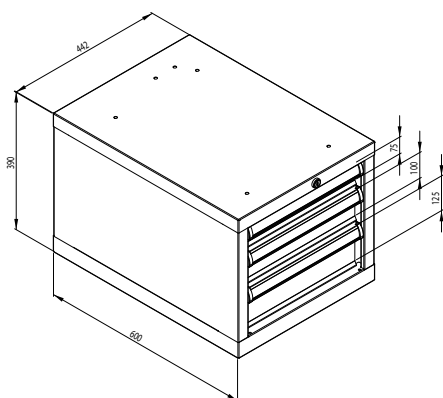
607059

### DRAWER CABINET SB390

2 drawers 100/200	Article no.:	607059
2 drawers ESD 	Article no.:	607060
Equipment	Incl. lock	
Material	Powder-coated sheet steel	



Conductive design per DIN EN 61340-5-1;  
suitable for use in ESD protected zones.



### DRAWER CABINET SB 390

3 drawers 75/100/125 Article no.: 607061

3 drawers ESD  Article no.: 607062

Equipment Incl. lock


Material Powder-coated sheet steel



607061

### DRAWER CABINET SB 590

3 drawers 75/125/300 Article no.: 607064

3 drawers ESD  Article no.: 607065

Equipment Incl. lock

Material Powder-coated sheet steel



607064

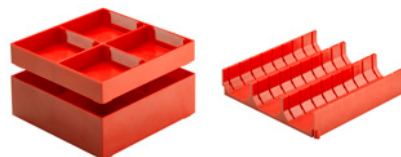
### COLOURS:

-  Standard RAL 7035 (light grey)
-  ESD RAL 7037 (dusty grey)
- Further configurations and variants on request.



**4-METAL COMPARTMENT**

Height (mm)	Weight (kg)	Article no.:
75	0,4	AS6192711
100, 125	0,6	AS6192712
150	0,9	AS6192713
200, 250	1,2	AS6192714
300	2,0	AS6192715
Description		2 even divisions 1 slitted division

**PLASTIC BOXES**

Minimum Height drawer front (mm)	Weight (kg)	Article no.:
75	0,6	AS61927PK25
75	0,9	AS61927PK50
100	1,2	AS61927PK75
Description		6 boxes W x D 153 x 153 mm 6 big divisions 12 small divisions

**9-METAL COMPARTMENT**

Height (mm)	Weight (kg)	Article no.:
75	0,7	AS6192721
100, 125	1,2	AS6192722
150	1,7	AS6192723
200, 250	2,5	AS6192724
300	3,9	AS6192725
Description		6 even divisions 2 slitted divisions

**PLASTIC TUB-12**

Width	Weight (kg)	Article no.:
70 mm	0,6	AS61927PU2
Description		6 two-part tubs W x D 153 x 153 mm 12 divisions

**12-METAL COMPARTMENT**

Height (mm)	Weight (kg)	Article no.:
75	1,1	AS6192731
100, 125	1,7	AS6192732
150	2,4	AS6192733
200, 250	3,5	AS6192734
300	5,5	AS6192735
Description		8 even divisions 3 slitted divisions

**PLASTIC TUB-18**

Width	Weight (kg)	Article no.:
45 mm	0,7	AS61927PU3
Description		6 three-part tubs W x D 153 x 153 mm 18 divisions


**PLASTIC TUB-24**

Width	Weight (kg)	Article no.:
33 mm	0,8	AS61927PU4
Description		6 four-part tubs W x D 153 x 153 mm 24 divisions



The backrest has an oscillating support and offers constant and adjustable backrest pressure.

### CLASSIC INDUSTRIAL SWIVEL CHAIRS with flat base and casters

<b>WS1220</b>	<b>Article no.:</b>	<b>620100</b>
<b>WS1220 ESD</b> 	<b>Article no.:</b>	<b>620110</b>
<b>Equipment</b>	Flat base with casters	
<b>Seat height</b>	468mm – 643mm	
<b>Backrest height adjustment</b>	60mm	
<b>Backrest tilting</b>	10° forwards 20° backwards	
<b>Seat tilting</b>	5° forwards 4° backwards	
<b>Seat depth / width</b>	420mm / 440mm	
<b>Backrest height / width</b>	300mm / 420mm	
<b>Seat and backrest material</b>	PU integrated foam	




620100



Gentle height adjustment with safety gas-pressure spring backrest, with steplessly adjustable height and tilt angle.

### CLASSIC INDUSTRIAL SWIVEL CHAIR with flat base and sliders

<b>WS1210</b>	<b>Article no.:</b>	<b>620120</b>
<b>WS1210 ESD</b> 	<b>Article no.:</b>	<b>620130</b>
<b>Equipment</b>	Flat base with sliders	
<b>Seat height</b>	455mm – 630mm	
<b>Backrest height adjustment</b>	60mm	
<b>Backrest tilting</b>	10° forwards 20° backwards	
<b>Seat tilting</b>	5° forwards 4° backwards	
<b>Seat depth / width</b>	420mm / 440mm	
<b>Backrest height / width</b>	300mm / 420mm	
<b>Seat and backrest material</b>	PU integrated foam	




620120



High version incl. foot ring as a climbing aid and footrest.

### CLASSIC INDUSTRIAL SWIVEL CHAIR with flat base and sliders

<b>WS1211</b>	<b>Article no.:</b>	<b>620140</b>
<b>WS1211 ESD</b> 	<b>Article no.:</b>	<b>620150</b>
<b>Equipment</b>	Flat base with sliders incl. foot ring	
<b>Seat height</b>	640mm – 875mm	
<b>Backrest height adjustment</b>	60mm	
<b>Backrest tilting</b>	10° forwards 20° backwards	
<b>Seat tilting</b>	5° forwards 4° backwards	
<b>Seat depth / width</b>	420mm / 440mm	
<b>Backrest height / width</b>	300mm / 420mm	
<b>Seat and backrest material</b>	PU integrated foam	



620140

Footring Ø 440 mm

### KLIMASTAR INDUSTRIAL SWIVEL CHAIR

with flat base and casters

**WS9220** Article no.: **620010**

**WS9220 ESD**  Article no.: **620020**

Equipment	Flat base with casters
Seat height	463mm – 638mm
Backrest height adjustment	yes
Backrest tilting	7° forwards 9° backwards
Seat tilting	5° forwards 3° backwards
Seat depth / width	430mm / 450mm
Backrest width	390mm
Seat and backrest material	Detachable PU foam, colour black (other colours on request)



620010



Intuitive and easy to operate adjustment lever for backrest height adjustment, backrest locking

### KLIMASTAR INDUSTRIAL SWIVEL CHAIR

with flat base and sliders

**WS9210** Article no.: **620030**

**WS9210 ESD**  Article no.: **620040**

Equipment	Flat base with sliders
Seat height	440mm – 625mm
Backrest height adjustment	yes
Backrest tilting	7° forwards 9° backwards
Seat tilting	5° forwards 3° backwards
Seat depth / width	430mm / 450mm
Backrest width	390mm
Seat and backrest material	Detachable PU foam, colour black (other colours on request)



620030



Detachable upholstery  
Easy to clean  
Fully perforated  
seat and backrest surface  
improve the micro-climate

### KLIMASTAR INDUSTRIAL SWIVEL CHAIR

with flat base and sliders

**WS9211** Article no.: **620050**

**WS9211 ESD**  Article no.: **620060**

Equipment	Flat base with sliders
Seat height	Incl. climbing aid, armrest is an accessory
Backrest height adjustment	630mm – 865mm
Backrest tilting	yes 7° forwards 9° backwards
Seat tilting	5° forwards 3° backwards
Seat depth / width	430mm / 450mm
Backrest width	390mm
Seat and backrest material	Detachable PU foam, colour black (other colours on request)



620050




Tall backrest  
large seat surface with tilt  
adjustment  
fine-adjustable  
backrest compression  
for healthy  
and dynamic sitting




## ACCESSORIES | CLIMBING AID

for Klimastar industrial swivel chairs

Climbing aid 06.90	Article no.:	620070
Climbing aid 06.90 ESD 	Article no.:	620080
Details	Tilt adjustable by 23°, height adjustable by 60mm, non-slip footrest plate, folds up and follows the rotational movement of the chair	
Material	Chrome-plated steel	




## ARMREST

<b>Armrest 011 CH.90</b>	<b>Article no.:</b>	<b>620090</b>
<b>Details</b>	Integrated foam support	
<b>Material</b>	Tube: Chrome-plated steel	
<div> <b>Conductive design per DIN EN 61340-5-1; suitable for use in ESD protected zones.</b></div>		



## ACCESSORIES | CLIMBING AID

for Classic industrial swivel chairs

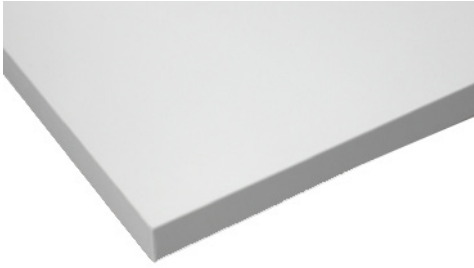
Foot ring 05 K	Article no.:	620160
Foot ring 05 K ESD 	Article no.:	620170
Details	Diameter 440mm	
Material	Chrome-plated steel	



## HIGH-QUALITY INDUSTRIAL SWIVEL CHAIRS


motivate your personnel and enhance efficiency.  
In particular, numerous sickness absences are prevented.  
One third of all sick days result from back pain!

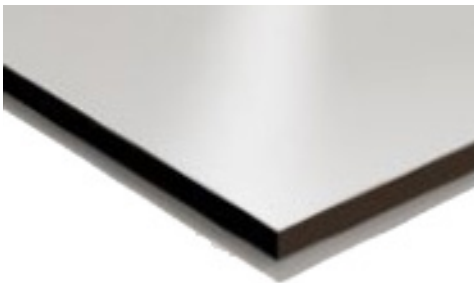


**COATED CHIPBOARD light grey**

<b>Delivery options</b>	Sheet material and pre-cut
<b>Thickness</b>	8, 10, 19, 38 mm
<b>Edge finish</b>	Optionally without edges, panel lamination or 2mm ABS edge
<b>Colour</b>	Similar to RAL 7035 (light grey) Special colours possible

**COATED CHIPBOARD ESA light grey**

<b>Delivery options</b>	 Sheet material and pre-cut
<b>Thickness</b>	19, 28.4, 38 mm
<b>Edge finish</b>	Optionally without edges, panel lamination or 2mm ABS edge
<b>Colour</b>	Similar to RAL 7035 (light grey)

**COATED COMPACT PANELS light grey**

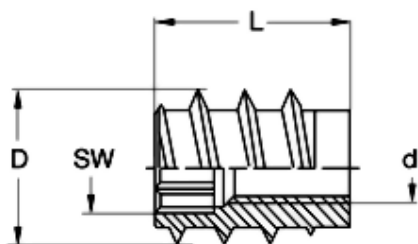
<b>Delivery options</b>	Sheet material and pre-cut
<b>Thickness</b>	4, 6, 8, 10, 13 mm
<b>Application options</b>	Racks, panelling, desktops
<b>Colour</b>	Similar to RAL 7035 (light grey) Special colours possible

**MULTIPLEX PANELS**

<b>Delivery options</b>	Sheet material and pre-cut
<b>Thickness</b>	40 mm

All panels can also be ordered from ASK with individual processing (shape, holes, CNC milling, etc.).





## CONNECTION SLEEVE FOR DESKTOPS

**Sleeve M6**  
**Dimensions**



**Article no.:** 370400  
D = 12mm, d = M6,  
L = 12mm, sw = 6mm  
**Core hole** 10mm

**Sleeve M8**  
**Dimensions**

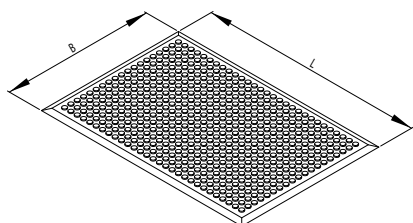
**Article no.:** 370405  
D = 14mm, d = M8,  
L = 18mm, sw = 8mm  
**Core hole** 12mm

**Material**

Bare steel



Conductive design per DIN EN 61340-5-1;  
suitable for use in ESD protected zones.



## FOOT MAT

Foot mat for ergonomic working places.  
These foot mats are available in different sizes and can change  
your working place into a ergonomic optimised one.

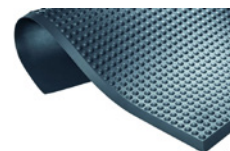
Suitable foot mats for every working place!  
Sizes on request.

**Foot mat**



**Material**

Polyether, anthracite-grey RAL 7016





**ASSEMBLY TABLE** electrically height adjustable

Equipment	System luminaires (2 units)
	Power strip
	Rear panel
	Casters



**ASSEMBLY TABLE** electrically height adjustable

Equipment	System luminaires
	Power strip
	Material level swivelling
	Footrest
	Desktop in special colour
	Bottle holder
	Drawer cabinet, wheeled
	Sliding strip for tool suspension



**ASSEMBLY TABLE** electrically height adjustable

Equipment	Several system luminaires
	Material level swivelling
	Various grab containers

### ASSEMBLY TABLE electrically height adjustable

Equipment	System luminaires (2 units)
	Air stream rail
	Information board
	Swivelling arm for monitor
	Material level swivelling with grab containers,
	Bottle holder
	Sliding strip with balancer for tool suspension
Assembly device with tilt adjustment	



### ASSEMBLY TABLE electrically height adjustable

Equipment	System luminaire
	Information board
	Swivelling arm for monitor
	Material level swivelling
	Several grab containers
	Air stream rail



### ASSEMBLY TABLE electrically height adjustable

Equipment	System luminaire
	Energy strip
	Material level swivelling
	Swivelling boom for tool suspension
	Bottle holder
	Side table height adjustable



### ASSEMBLY STATION WITH LINK

#### Equipment

System luminaires  
Power strip  
Material level swivelling  
Industrial swivel chair  
Link with workpiece  
carrier system TS1  
Pneumatic box lifter



### REWORK TABLE

#### Equipment

System luminaires (2 units)  
Power strip  
Working level rotates through 360°  
Locking via disc brake (foot switch)  
Various grab containers  
Bracket for hot air gun



### MOBILE REWORK TABLE

#### Equipment

System luminaire (2 units)  
Power strip  
Tilted desktop  
Material level swivelling  
Tool cabinet  
Additional levels pull out  
Casters  
Waste bin  
Bracket for hot air gun



### **SIDE TABLE** electrically height adjustable

<b>Equipment</b>	Electrical lifting column Casters, Desktop Store
------------------	---



### **WORKING TABLE HV** with swivelling frame

<b>Equipment</b>	System luminaires Working level rotatable Lifting column Power strip
------------------	---



### **ASSEMBLY STATION** electrically height adjustable

<b>Equipment</b>	LED system luminaire Roller bars for material handling Lifting column Drawer cabinet Desktop
------------------	--





### ASSEMBLY STATION U-shaped

#### Equipment

System luminaire  
Angle connector  
Adjustable feet



### ASSEMBLY STATION with closed profiles

#### Equipment

System luminaire  
Power strip  
Sliding strip for tool suspension  
Desktop



### ASSEMBLY STATION with conveyor track

#### Equipment

System luminaire  
Power strip  
Sliding strip for tool suspension  
Conveyor track  
Lifting columns  
Material level swivelling  
Swivelling arm for monitor  
Desktop



## INSTALLATION SITE for automotive parts

### Equipment

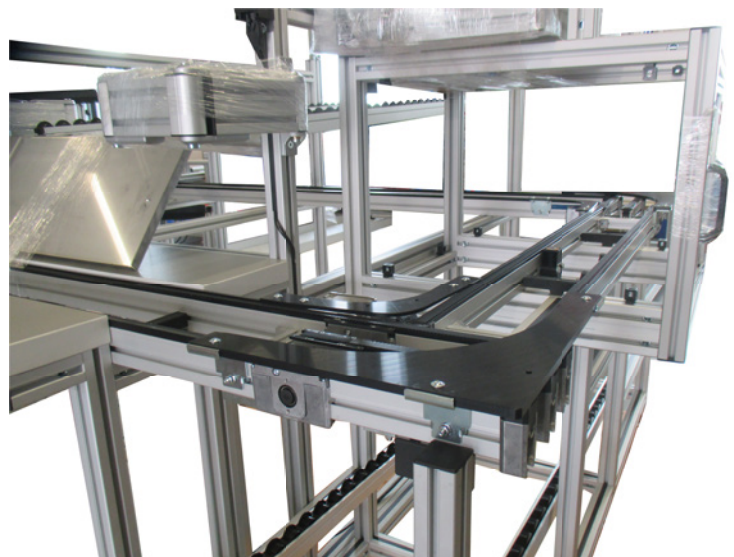
Compact panels  
Tool cabinet  
Acoustic insulation



## TRANSFER SYSTEM

### Equipment

Workpiece slide, stainless steel  
BOSCH transfer system  
Swivelling arm  
Roller bars for material handling

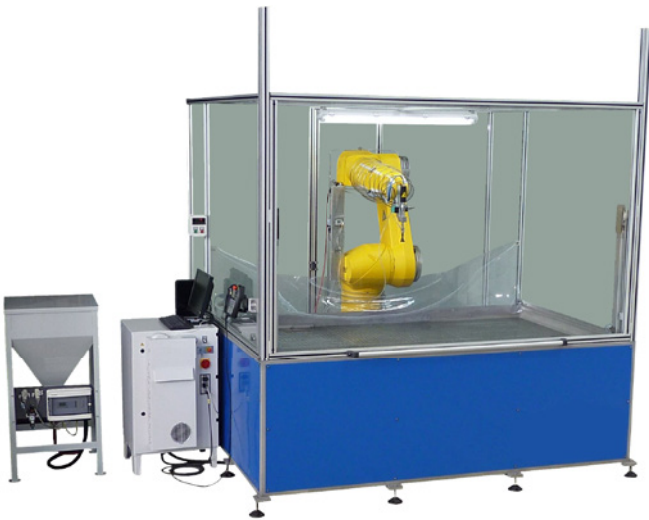




### PROTECTIVE ENCLOSURE

#### Equipment

Foundation bracket  
Handles  
Polycarbonate glass  
Hinges for flaps and doors



### PROTECTIVE ENCLOSURE

#### Equipment

Supports  
Polycarbonate glass  
Sheet metal for covering the bottom



### PROTECTIVE ENCLOSURE

#### Equipment

Foundation bracket  
Handles  
Polycarbonate glass  
Hinges for flaps and doors



## ASSEMBLY LINE

### Equipment

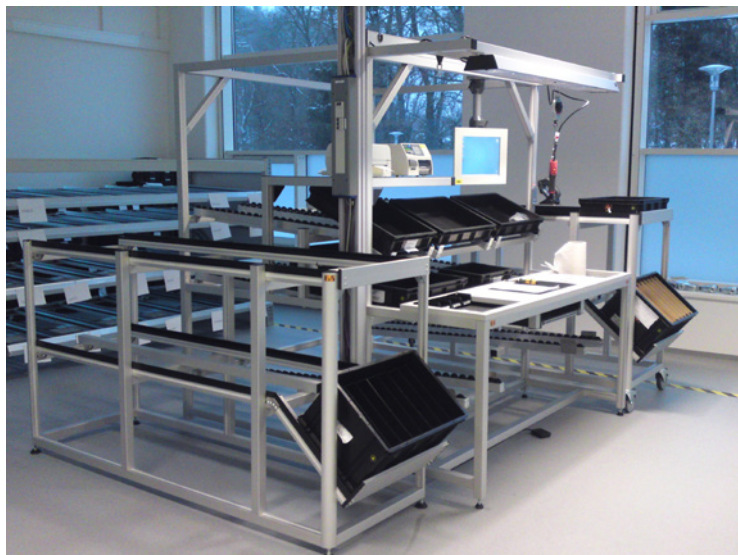
System luminaires  
Roller track for material handling  
Monitor bracket  
Screwdriver suspension



## ASSEMBLY LINE

### Equipment

System luminaires  
Roller track for material handling  
Monitor bracket  
Screwdriver suspension  
Material level



## PRODUCTION SYSTEM

### Equipment

Desk electrically height adjustable  
System luminaires with drawbar  
Power strip  
Material level

